

QUOTATION INVITED

Sealed competitive quotations under two bid system are invited from reputed interior decorators / Contractors having proven track record in the field, for undertaking the work of furnishing and interior decoration of Coir Board Showroom & Sales Depot located at T.C. 25/360-2, Ramakrishna Building, Aristo Junction, East Thampanur, Thiruvananthapuram – 695 001.

The details of Design and tender schedule are available on our website: www.coirboard.gov.in The quotations in two bid system should reach the Secretary, COIR BOARD, M.G. Road, Kochi-16, in sealed cover superscribed “Quotation for Interior decoration of Trivandrum Showroom” on or before **15.00 Hrs. on 30 Nov. 2016**, which will be opened on the same day, at 15.30 Hrs. in the presence of bidders present, if any. The Secretary, Coir Board reserves the right to accept or reject any or all the quotations without assigning any reason, whatsoever.

Sd/-
SECRETARY

**Terms and Conditions and other Important aspects for submission of bids for interior decoration of Coir Board Showroom & Sales Depot located at T.C. 25/360-2, Ramakrishna Building, Aristo Junction, East Thampanur, Thiruvananthapuram – 695 001.
Ph: 0471 2325315**

1. The quotations should be submitted in two bid system ie. Technical Bid and Financial Bid, in separate sealed covers.
2. The Technical bid and financial bid in separate sealed covers shall be put in a large cover, superscribing “**Quotations for Interior Decoration of Coir Board Showroom & Sales Depot, Trivandrum**”.
3. The time for completion of the work is 1 month.
4. The bid should be addressed to the Secretary, COIR BOARD, M.G. Road, Kochi-16, Ernakulam, Kerala.
5. The Name and complete address of the Tenderer shall be mentioned on the left hand bottom portion of all the covers.
6. The Cover Containing Technical Bid, super scribed “**Technical Bid for the Work of Interior Decration of Coir Board Showroom TVM**” shall be prepared as follows and contain the following:
 - a) **EMD for an amount of Rs. 25,000.00** (Rupees Twenty five thousand only) in the form of DD, drawn in favour of Secretary Coir Board payable at Ernakulam. (*Firms under Central Purchase Committee and firms registered under NSIC/ MSME are exempted from submitting EMD. Copy of the certificate proving their registration details should be attached*)
 - b) The bid shall be prepared legibly and neatly. All pages of the bid shall be page numbered and signed by the person or persons who shall be the authorized signatory of the bid.
 - c) Real photographs (not 3D graphics) and copies of documents proving past experience in carrying out similar works.
 - d) Copies of documents proving financial and manpower capabilities and also the descriptions about the creative crew.
 - e) Valid service tax registration number and copy of the Income tax PAN card should be included.

7. The Cover Containing Financial Bid, super scribed "Financial Bid for the Work of Interior Decration of Coir Board Showroom TVM" shall contain the total amount quoted (in the given format only) for carrying out the work. The rate shall be all inclusive Duties and taxes, if any, shall the indicated as separate elements with percentage applicable.
8. The design provided by the Board will be the basis for submitting the quotation.
9. The payments will be effected by the Board in Installments based on the progress of the work. Advance, if any, demanded by the Contractor shall be released up to 30% of the value of the contract, 30% on half of the work and the balance amount will be on completion of the work.
10. Income tax and other taxes as per rules as applicable will be deducted by the Board at every stage of release of payment.
11. Coir floor tiles required for furnishing the showrooms will be provided by the Board at its cost.
12. Any Tender received by Coir Board after the due date & time for submission of Tender prescribed by Coir Board will be rejected and /or returned unopened.
13. Changes and alterations which materially alter the Tendered prices are not permitted after the opening of the Tender document.
14. Coir Board will open / examine the Financial Bid, of only those bidders whose Technical bid is found to be acceptable to determine whether they are complete, whether any computational errors have been made, whether the documents have been properly signed, and whether the Tenders are generally in order.
15. The comparison of the rates offered shall be on the basis of the total rates offered inclusive of all taxes.
16. Item-wise rate list for one unit and price quoted for whole quantity in separate column.
17. The Contractor selected will have to execute an agreement with Coir Board in a stamp paper worth Rs.100/- and sign an integrity pact. Performance guarantee amount @ 5% of the work will also have to be deposited by the successful bidder.
18. Conditional bidding of price and conditional offer of discounts will not be accepted and such offer can render the bids liable for rejection. The amount quoted should be written in words and figures. Any correction, over writings will have to be attested.
19. Bids shall be submitted in sealed cover only. Bids through fax, e- mail etc. will not be entertained.
20. Incomplete bids, unauthenticated bids and bids received after the appointed time will be summarily rejected.
21. The terms and conditions of the work will be interpreted in Indian Laws and will be under the jurisdiction of judicial court at Ernakulam, Kerala.
22. Secretary, Coir Board reserves the right to accept or reject any or all the quotations either in full or in part, without assigning any reasons, whatsoever.

Sd/-

SECRETARY, COIR BOARD

Attached Files:

1. Detailed BoQ
2. 3D Drawings of the proposed design from 4 different view points.
3. Paln in detail
4. Drawings of sections
5. Images of Portrait Display unit (Signage no.6)
6. Images of table and chairs

**TENDER SCHEDULE FOR THE PROPOSED WORKS OF
INTERIOR DECORATION OF
COIR-BOARD SHOWROOM & SALES DEPOT
T.C. 25/360-2, Ramakrishna Building, Aristo Junction,
East Thampanur, Thiruvananthapuram – 695 001
Ph: 0471 2325315**

All the firms who are participating in this tender
must visit the site at the above address

	DESCRIPTION OF THE WORK	Area	Qty.	Rate	Amount
A	CIVIL WORK				
1	Demolishing Work & Removing Debris from the site.				
a	Plumbing Work	existing			
b	Existing flooring				
c	Brick Work, Doors& front 2 windows etc.	136.90	Cft		
d	Existing furniture and false ceiling, flooring				
	TOTAL SHOW ROOM REMOVING ABOVE ITEMS	1300.00	Sqft		
	TOTAL CIVIL WORK				
B	FALSE CEILING WORK				
1	Providing and fixing suspended Gypboard false ceiling including GI perimeter & intermediate channels of 22 guage, ceiling angles, 12.5mm Gypboard (conforming to IS-2095-1982) GI cleat and steel expansion fasteners (as per recommended specifications / practice of India Gypsum. Rate to include for hanging the supports from RCC slab/MS structural framework and providing extra framework for electrical fixtures, AC diffusers/ducts or any other cut-outs, scaffolding etc. complete.	1100.00	Sqft		
2	Providing and fixing suspended Gypboard false ceiling including GI perimeter & intermediate channels of 22 guage, ceiling angles, 12.5mm Gypboard (conforming to IS-2095-11982) GI cleat and steel expansion fasteners (as per recommended specifications / practice of India Gypsum. Rate to include for hanging the supports from RCC slab/structural Fframework and providing extra framework for Providing cut outs in ceiling & providing coir designs ,steps or any other cut-outs, scaffolding etc. complete.For steps ,designs & cut outs etc.	300.00	Sqft		
3	Providing & fixing of POP cornish 3" Width corners in ceiling fixing with pop putty in all coners as per views	170.00	Rft		
4	Gypsum Board Partition :- Providing and fixing of 75 mm thick metal stud partition with one layer of tapered edge 12.5mm thick gypboard . Board to be screwed fixed with dry wall screw 25 mm at 300 mm c/c to either side of 48 mm studs ,(55 mm thick having one flange 34 mm and other flange 36mm made of GI steel ,gyp steel), and skirting using 12mm thick calcium silicate screwed to metal studs. with joints staggered to avoid leakage through joints .Square and tapered edges of the boards are to be jointed and finished with jointing compound, joint paper tape and 2 coats of dry wall top coat suitable for gypboard Rates to be inclusive of providing angle bead /edge bead to provide protection to gypsum edges .(details as per design)	346.00	Sqft		
	TOTAL FALSE CEILING WORK				

C	CARPENTRY WORK				
1	Providing/ Fixing of 16 mm Marine ply with frame work for closing all existing windows inside the store area	55.00	Sqft		
2	Providing and fixing of back display counter with 16 mm Marine plywood & 10 mm thick glass 5 racks , using marino laminates beach wood shade 1mm thick all the sides except back & racks , as per drawing 1.76 length	4.00	Nos		
3	Providing and fixing of back display counter with 16 mm marine ply with 10 mm glass racks 5 nos, using marino laminates beach wood shade 1mm thick all the sides exsept back & racks , as per drawing 1.50 length	1.00	Nos		
4	Providing & Fixing of Long display counterleft side of the wal as per drawings with 10 mm thick glass racks 5 nos with 16mm marine ply & 1mm Marino beach wood shade as per design 7.20 Length & 2.10 height x 45 depth	1.00	Nos		
5	Providing and fixing of centre display unit with 16 mm marine ply with 10 mm glass racks using marino laminates beach wood shade 1mm thick all the sides exsept back & racks , as per drawing 1.80 length	2.00	Nos		
6	Providing and fixing of Display unit with 16mm ,marine ply with 10 mm glass racks using marino laminates beach wood shade 1mm thick ,2 sides 6mm Mirror finish , as per drawing 3.10Length as per drawing	1.00	Nos		
7	Providing and fixing of Display unit with 16 mm marine ply with 10 mm thick glass racks 5 nos using marino laminates beach wood shade 1mm thick ,2 sides 6mm Mirror finish , as per drawing 1.20Length as per drawing	2.00	Nos		
8	Providing and fixing of Front side window display counter with 16mm marine ply & 10mm glass racks using marino laminates beach wood shade 1mm thick with glass sliders , as per drawing 3.0m length	2.00	Nos		
9	Reception Table - 240 x 60 x(75,120) ,side unit 120 x60x75 cm& back unit 240x60x75 cm refer dwg: using 16mm marine grade plywood, inside laminate finish, single pull out Drawer unit, below single storage unit with MDF shutter, all exposed surfaces laminate finish, hardwood edge lipping, 12mm glass top, metal plate as per design, 8mm Froasted glass cladding, all necessary hardwares of ebco make [soft closing hinges,telescopic drawer sliders, SS handle, lock, SS spacer, wire manager etc.,] , foot rest, Complete a per design.	2.00	Nos		
10	Entrance area fixed glass : using 12mm thick toughned glass, fixed over virtrified flooring, all exposed edges flat polished, including all necessary patch fittings, SS handles, lock, floor spring etc., of Dorma make, materials, labour and conveyance etc. complete.	53.50	Sqft		
11	Entrance area swing door: using 12mm thick toughned glass, swing door of size 1100 x 2300 mm, fixed over virtrified flooring, all exposed edges flat polished, including all necessary patch fittings, SS handles, lock, floor spring etc., of Dorma make, materials, labour and conveyance etc. complete.	2.00	Nos		
12	Providing & fixing of 12 mm plain fixed glass infront of ther front display counters with 16mm thick marine plywood boxing for top & bottom with laminate finish including all necessary fittings as per standard specification.	184.00	Sqft		
13	P/Fixing of plywood boxing on the RCC Column in 2" x 1 ½" sal wood frame,finished in 12 mm thk. CR plywood and 1.0 mm thk specified laminate,complete with nails,screws-All material to be provided by contractor	182.00	Sqft		
14	Pantry table : necessaty MS frame, 15mm shera board withgranite top, edge bending, complete as per design, with top storage unit	1.00	Nos		

15	Storage unit [90 cm ht] each bottom & top unit in PANTRY : 60 & 30 cm cm depth storage using marine grade plywood boxing ,aluminium profiled shutters with frosted glass [enox make], inside plywood rack, edge lipping using hardwood with melamine finish, all inside and exposed plywood surface covered with laminate, necessary hardwares complete as per design.	60.00	Sqft		
16	Providing & Fixing of storage racks with MS Frames 2"x1.5" tube frame work & racks with checkered marine ply 12mm thick with all neceesary fixing as per standard specifications	194.00	Sqft		
16 a	Providing & Fixing of storage racks with MS Frames 2"x1.5" tube frame work & racks with checkered marine ply 12mm thick with all neceesary fixing as per standard Specifications 120 WIDTH	90.00	Sqft		
17	P/F OF Display racks with MS FRAME 4"x3" tubes outer frame & 2"x1.5" MS tebe outer frames & comercial ply leaves ,total 12 leaves 4'x7' sizes , painted finish as per standatrdr specifications(SAME AS TILE DISPLAY RACKS)	1.00	Nos		
18	P/F OF 6mm Mirror four sides polished for pillars 0.90 x2.10 size fixing with spacers	41.00	Sqft		
19	FLUSH DOOR : Providing and fixing Flush Door to store room & pantry with HARD wood frame & both side hdf sheet as per standard specification including door frame	2.00	Nos		
	TOTAL CARPENTRY WORK				
D	FLOORING WORK				
1	Providind & fixing of vitrified tiles 60x 60 size basic cost 60 /sqft including moulding ,laying including skirting etc	450.00	Nos		
2	Providind & fixing of vitrified tiles FOR TOILET DADOOING 60x 30 size basic cost 60 /sqft including moulding ,laying including skirting etc	220.00	Nos		
2	FLOOR FURNISHING WORKS : Laying of Coir floor Tiles (provided by Coir Board.) Care to be taken that all tiles are laid according to the guidelines of the Manager of the Showroom. It is also suggested that the successful bidder should inspect the Coir tile before doing the work of flooring and skirting.	Sqft.	1000		
E	ELECTRICAL WORK				
	Total electrical work including point wiring for light, power circuits& metal clad sockets , fixing of switch/sockets, RG-6 wiring & TV cable sockets, Telephone/computer wiring sockets, fixing of DB's including MCB's, MCCB's etc and also including 1 earth	1300.00	sqft		
1	Supply & Wiring of 1.5 sqmm with 1.5 sq.mm. PVC insulated stranded copper wires in 19/25 mm dia. PVC conduit pipes including cost of cutting & filling chases including fixing a 6 amp. 240 Volt plate mounted switch with mounted cover plate in M.S. box & in		Per Point		
2	Supply & Wiring for 3 pin 240 volts 6 amp single phase and neutral switch socket with 2 * 1.5 sq.mm. PVC insulated copper wires in 19/25 mm dia PVC conduit including cost of cutting and filling chases, including fixing of plate mounted switch with mounted		Per Point		
3	Supply & Wiring for 240 volt 32 amp single phase and neutral socket outlet with 4.0 sq.mm. PVC wire in 25/32 mm dia. PVC conduit including cost of cutting and filling chases including fixing of metal clad 32 amp. Socket outlet with a 32 amp. SPN, includin		Nos		

4	Supply & Laying of RG-11 cable in 18 mm dia PVC conduit, including laying of RG-6 cable for individual sockets complete, fixing of splitters, including cost of cutting and filling chases, including fixing of plate mounted switch outlet.		Per Point		
5	Supply & Laying of 5 pair telephone cable in 18 mm dia PVC conduit including cost of cutting filling chases, including fixing of plate mounted on RG-11 outlet (Jack – pin type)		Per Point		
6	Supply & Wiring with CAT-5 from outdoor to the computer table and cashier table, in 18 mm dia. Conduit including cost of cutting filling , fixing of information outlet. (R.G. –45)		Per Meter		
7	Supply & Laying , fixing of distribution board including fixing of MCB's , Isolators, ELCB's .		LS		
8	Supply & Laying, commissioning of 3.5 , 4 sq.mm copper armoured cable from meter room to the distribution board, including fixing of cable glands.		Per Meter		
9	Supply & Wiring for 3 pin 240 volts 16 amp single phase and neutral switch socket with 2 * 2.5 sq.mm pvc insulated copper wires in 19/25 mm dia pvc conduit including cost of cutting and filling chases including fixing of plate in M.S. box & including the		Per Point		
10	Supply & Laying of 2.5 copper multi-strand flexible transparent wire for speaker in 19/25 dia pvc conduit pipes including the cost of cutting and filling chases.		Per Point		
11	Earthing pit		Job Work		
12	Fixing of 2x18 watts recessed light fixtures on false ceiling		Per Piece		
13	4'-long blue coloured t-5 tube light including circuit for all		LS		
	TOTAL ELECTRICAL WORK				
F	FURNITURE				
	CHAIRS				
	High back Manager Chair of reputed make GILMA PERNO DLX /EQUIVALENT BRAND	No	1		
	Low back Manager Chair of reputed make GILMA COMFY DLX /EQUIVALENT BRAND	No	2		
	Visitor Chair GILMA COMFY WITH OUT WHEELS/ EQUIVALENT BRAND	No	6		
	SOFA AND TABLE				
	3 seater galaxy Sofa with Chrome finish of Reputed Make.	NO	1		
	2 seater galaxy Sofa with Chrome finish of Reputed Make.	NO	1		
	Glass top Center table .	NO	1		
G	MISCELLANOUS WORK				
1	P/Applying of 2 Coats of Birla White Wall Care putty - SF& 3 coats of Plastic emulsion paint of approved quality on the walls TO BE FINISHED WITH ROLLER	2650.00	Sqft		
2	P/Applying of 2 Coats of primer - & 3 coats of Enamel paint of approved quality on Grills	212.00	Sqft		
H	SANITARY INSTALLATION				
1	Providing & fixing of WC , Parryware or cera, with CP brass with cistern CP brass 2- way bibcock with flange of Escco.	NO	1		
2	Poviding & fixing wall hung or counter basin (Parryware/cera)CP brass angular stop cock with wallflange CP brass pillor cock CP bottle trap, with wall connection pipe. Counter top on granite.	NO	1		
3	Piping for Bathrooms all new cpvc and pvc of supreme including all labour as per design.	NO	1		
4	P/F of SS sink in pantry with pillar cock with all necessary plumbing works as per standard specifications	NO	NO		

I	POP PUNNING : Punning of wall surfaces with POP for leveling in smooth surface to receive	sqft	1680		
J	Water Purifier				
	Kent water purifier (Grand Plus) with all required fittings.	NO	1		
K	SPLIT AIR CONDITIONERS				
	1.5 Tonn Split AC 3 Star,with, Stabiliser Piping and Drain System with Labour Charges. (Includes Upto 200 RFT of Piping if increases wil be charged extra) Make Hitach or Carrier.	NO	4		
J	SIGNAGE				
1	External signage – Rectangular backlit box signage of Altobond Light Green ACP, T5 Philips Tubelights, Coirboard both in Malayalam & English 3D letters 15" ht. of Spectra Bothside UV Coated Pet G Sheet with Cold Cathod/LED Lights(As per Sample Approved in White Color), Sides of Letters finished with 2" Brush finish SS trim, 16" thk Acrylic Box with Round finish Central Frame in Round shape with front openable for maintenance	sq.ft.	120		
2	Internal Graphics - P/F internal graphics of approved design and sizes	sq.ft.	250		
3	Internal Signages - P/F internal signages of approved design and sizes	Set	1		
4	Glass Film -	sqft	100		
5	P/F of Pole signage	no.	1		
6	Portrait Standing Kiosk with 50 inch LED/LCD Display and PC based Media Player with operating system and signage software. Detailed specifications: Display Features : Commercial Grade Display , 350mcd/m2 Display area : 50 inch Diagonal (42inch height and 24inch width) Resolution : 1920x 1080 pixels FHD Aspect Ratio : 16:9 Media Player : Intel Quad Core CPU 2.16ghz/ 2GB DDR3 /32GB SSD /WIN10 OEM OS(attached in the kiosk). Facility for crating content design templates according to user needs also web pages, images, videos, etc can be scheduled for display. Connectivity : Both LAN and WIFI Kiosk Cabinet : Exterior grade signage Aluminium profile Side Cooling /Exhaust fans Powder Coated Mild Steel front. Back side with Powder Coated Mild Steel door. Toughened glass front side to protect the screen. Digital Signage Content management and Control Server : Basic Digital Signage Management Server software to be installed in a Laptop/Desktop PC to load the contents to be displayed and to manage the display from single location over both LAN and WIFI. Warranty : 3 year onsite inclusive of all items and software/license	no	1		
	TOTAL MISCELLANOUS WORK				

SRNO	PARTICULARS				
A	CIVIL WORK				
B	FALSE CEILING WORK				
C	CARPENTRY WORK				
F	FLOORING WORK				
D	ELECTRICAL WORK				
F	FURNITURES				
G	MISCELLANEOUS WORK				
	CARPET AREA				
	RATE PER SQFT				

(Rupees.....)

Inclusive of all taxes.

Place:

Date: Seal (Name & Signature of the authorized signatory with address)

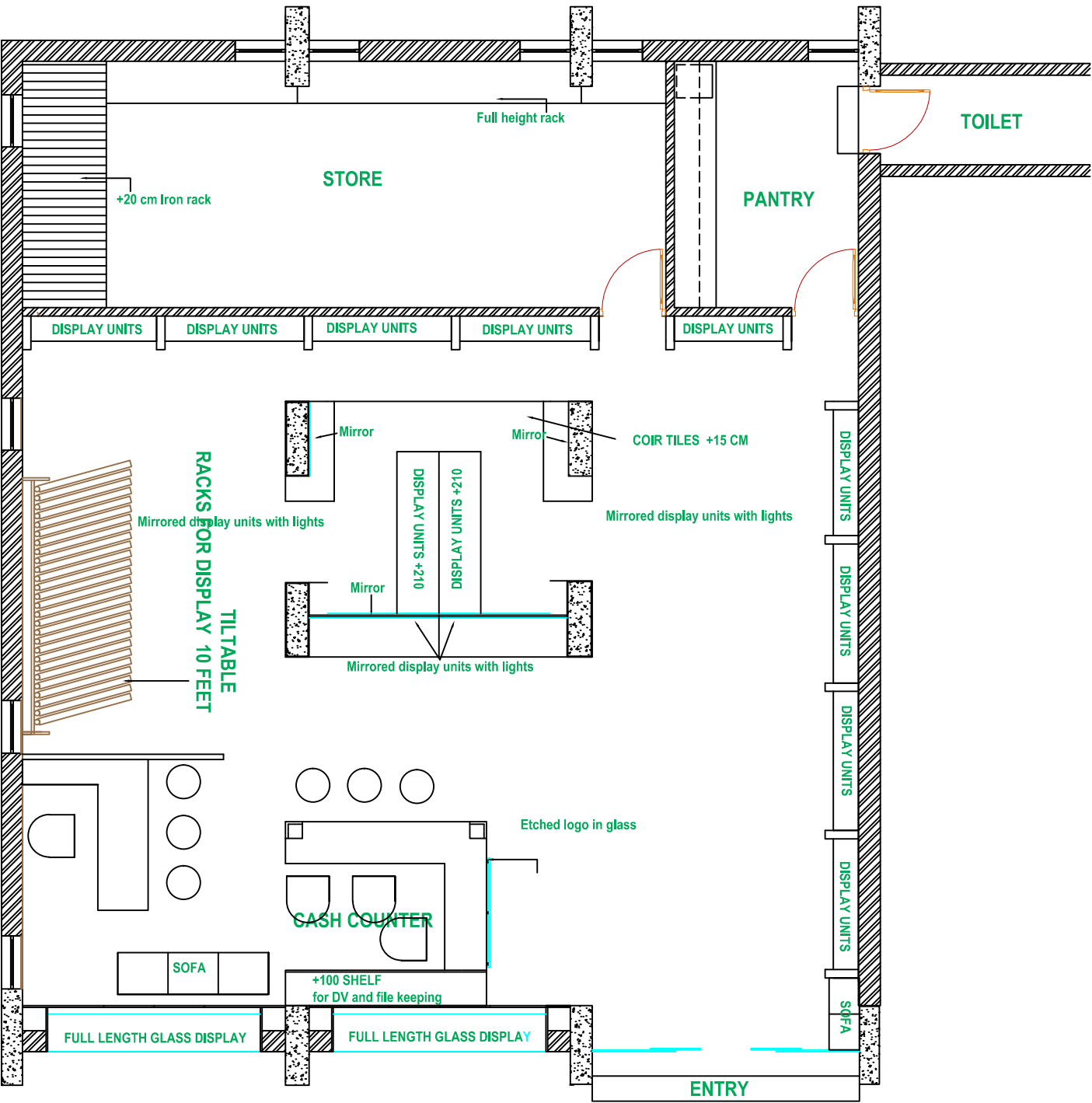






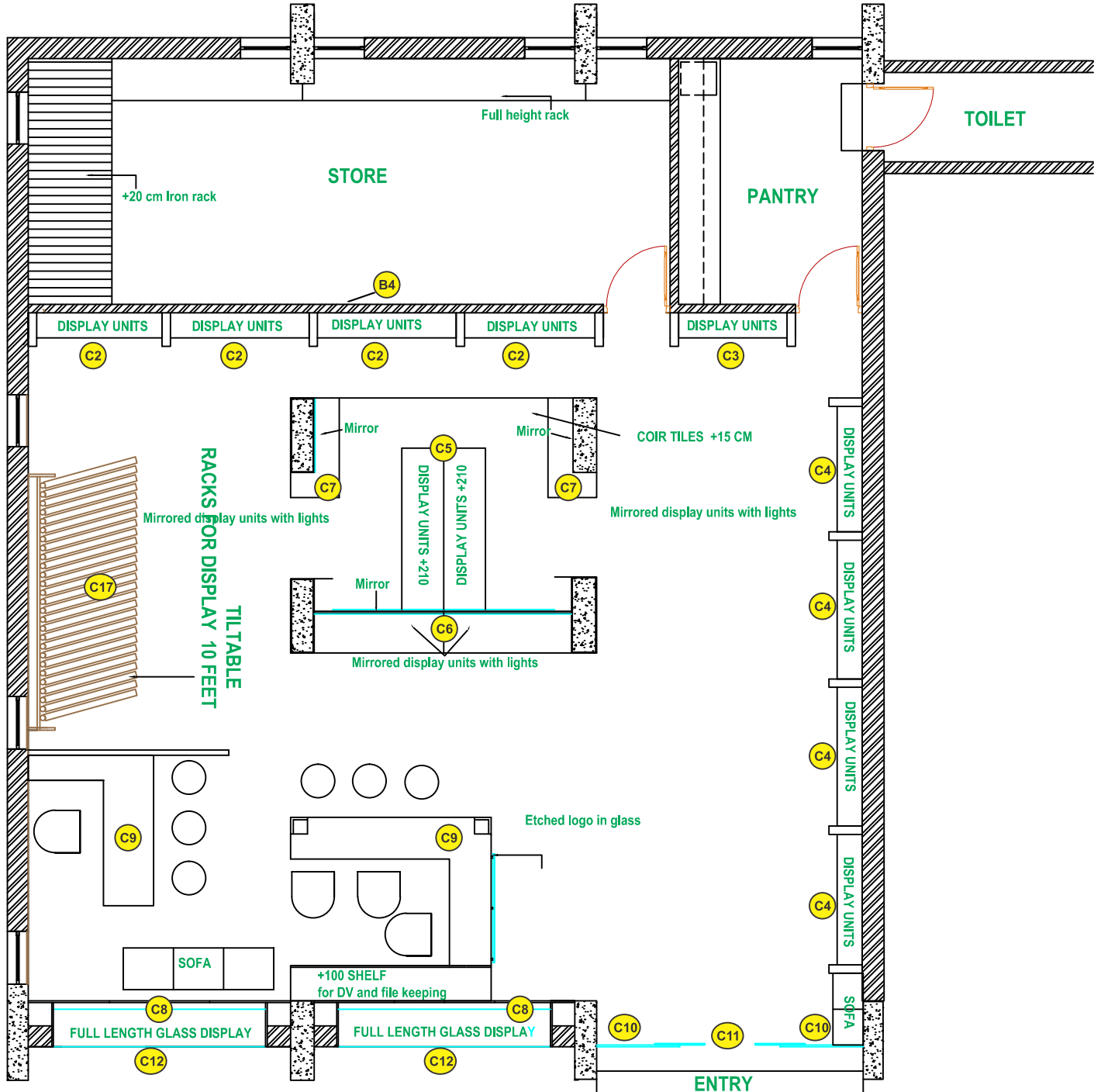


Plan



Plan

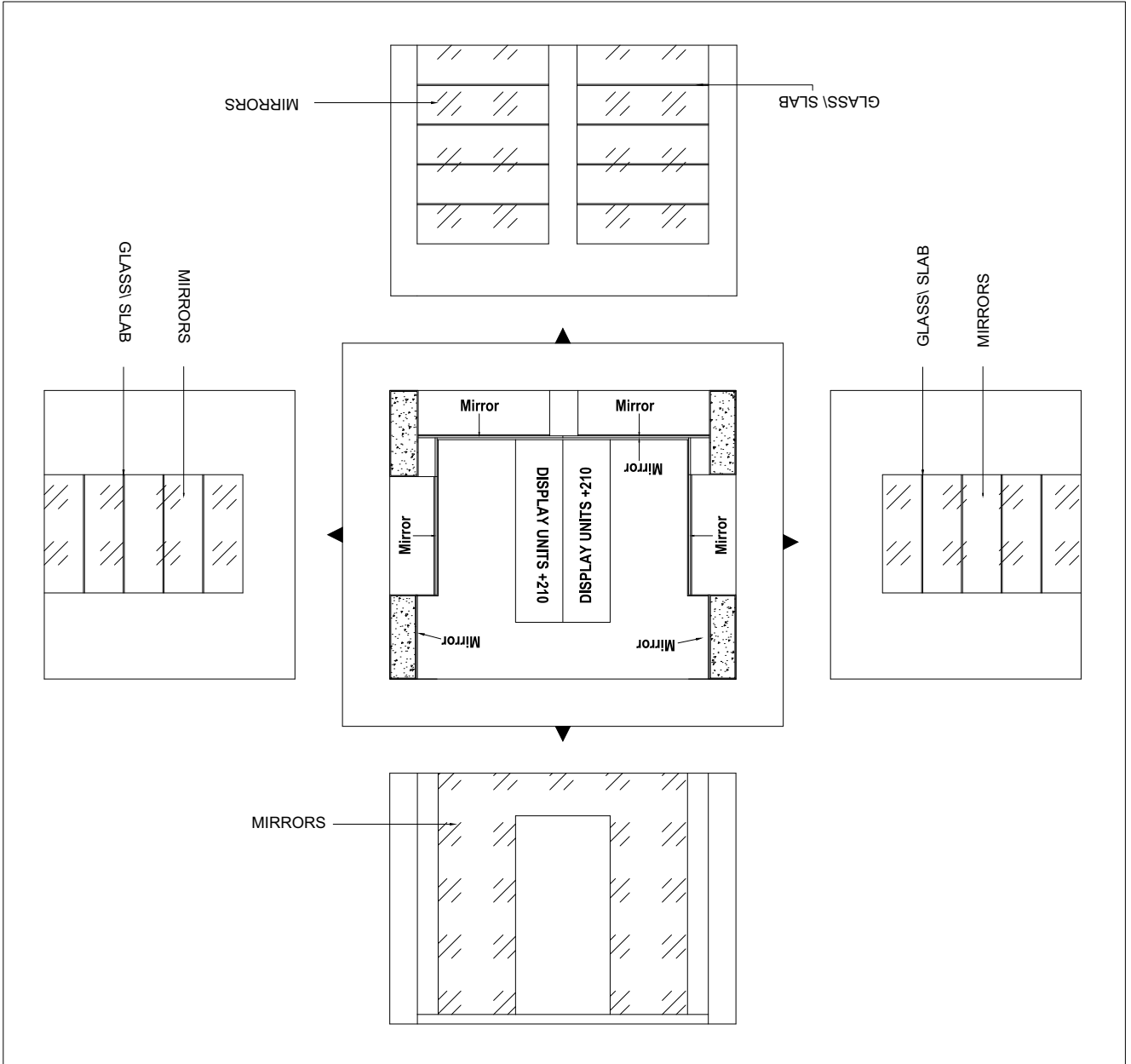
with some items marked

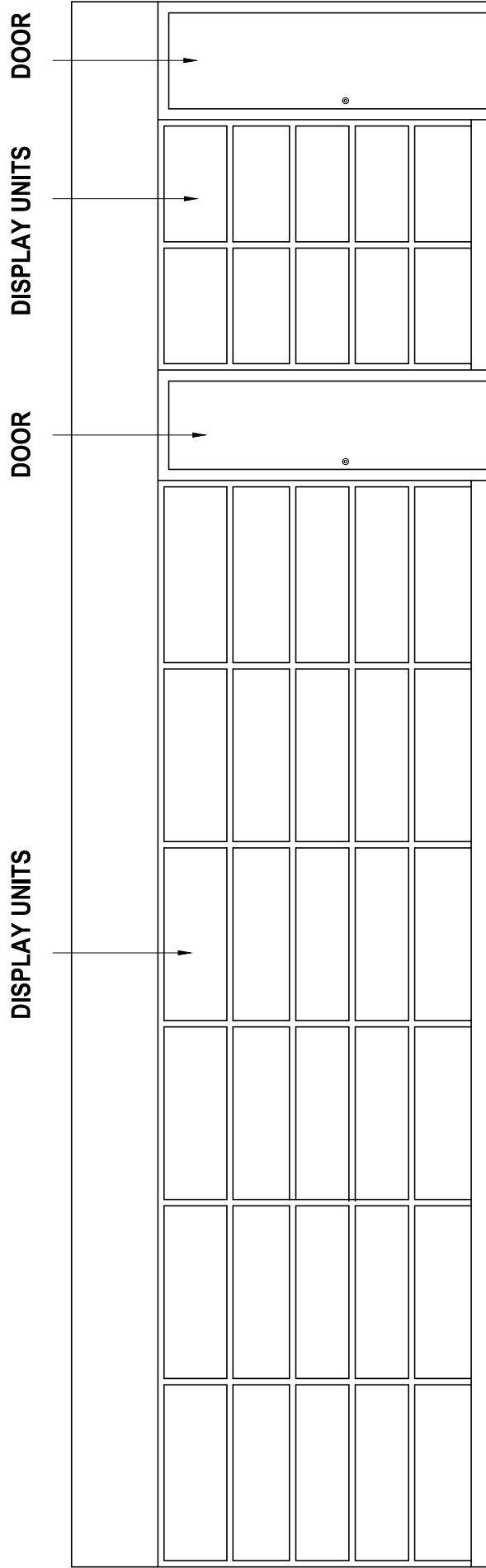


DISPLAY UNITS WITH LIGHTS



RIGHT SIDE DISPLAY UNIT





FRONT DISPLAY UNIT

